



BAUPARTNER HU

BAUPARTNER HU

THE RIGHT PARTNER.

PART OF BAUPARTNER GROUP.

ACHIEVING SUCCESS
THROUGH COLLABORATION

BAUPROJEKT

BAUELEMENTE

BAUPARTNER CONSTRUCT

BAUPARTNER BAUTECHNIK

4.500.000 M² BUILT
AND WE'RE NOT
STOPPING **HERE!**

THE RIGHT PARTNER

We are committed to delivering quality, value and satisfaction to our clients and partners. We aim to develop strong and trusted partnerships in close collaboration with our clients, designers, engineers, contractors and suppliers.

Through our complete services, we are able to see through the construction of a wide range of buildings. With more than 20 years of experience on the Romanian market, we are professionals in design and construction and we're dedicated in what we do:

TRANSFORMING
OUR CLIENTS'
IDEAS AND
PROJECTS
INTO REALITY.

EMAG BUDAPEST LOGISTIC CENTER

eMAG Hungary and Extreme Digital, the two leaders of online commerce in Hungary, join forces, giving rise to one of the most important e-commerce companies in Central and Eastern Europe.

GENERAL INFORMATION

-

Function:

Logistics and offices

Area:

116,457 m²

Location:

Budapest, Hungary

Client:

EMAG Logistica

Status:

Under construction

Year:

2021-2023

TASKS

-

General designer and general contractor



THE WAREHOUSE

-

About:

The second eMAG logistic center is similar to the first one, located in Romania.

The master plan of the new logistics development provides for the construction of a storage building of approximately 110,000 m in the first phase, with the possibility of doubling this area in the second phase of the project.

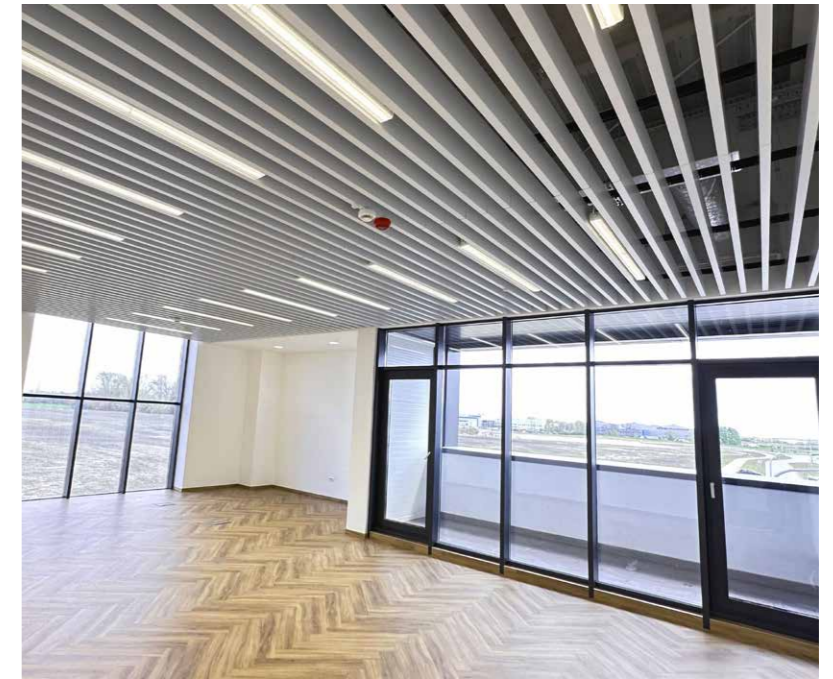




OFFICES

-

About:
This first unit will host all activities in the logistic sector, including courier operations.



EMAG 's LOGISTIC CENTER

eMAG is a pioneering Romanian company and the market leader in the e-commerce. The company has been continuously investing in technology-based services developed in Romania that save time and add value for their customers.

GENERAL INFORMATION

-

Function:
Logistics

Area:
255,114 m²

Location:
Joita, GR, Romania

Client:
EMAG Logistica

Status:
Built

Year:
2017-2021

TASKS

-

General designer and general contractor

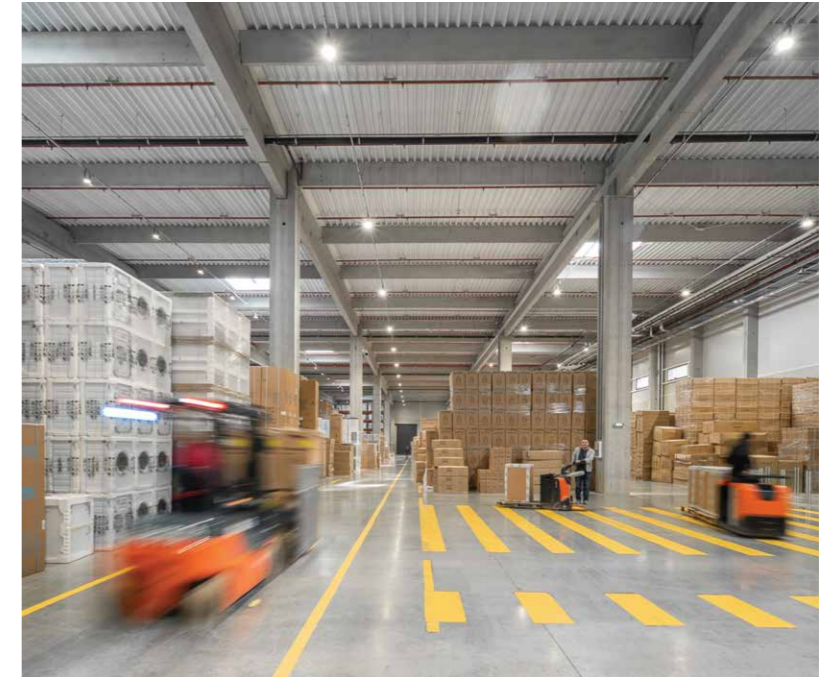


THE WAREHOUSES

-

About:

This large-scale logistics facility is situated close to the A1 highway, near Bucharest. In an expression of the values and the motto of the company – “online will always be easier”, the buildings have become the interface between the virtual and the physical world. They house all logistics-sector activities and give special attention to the social and interaction spaces for all the workers.



THE WAREHOUSES

About:

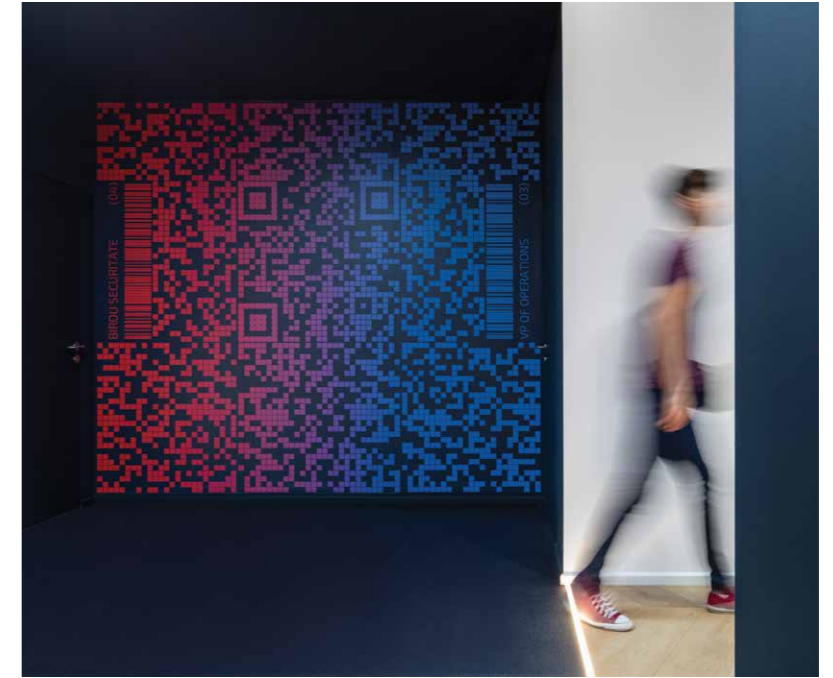
The buildings accommodate all the activities related to the logistic section. In addition to the main warehouse, it provides dedicated spaces for workers, locker rooms, dining rooms, offices and a truck and staff entrance building.



THE OFFICES

About:

The interior design for the office area was based on 2 pillars: the company philosophy (“Build for people”), and the its business model (the e-commerce that blends the logistics/ industrial area with the digital world).



HAIER

Haier Europe is part of Haier Smart Home, the number one group globally in home appliances and among the Fortune Global 500 Companies. Haier Smart Home is present in all 5 continents with 25 industrial parks, 10 research and development centers and approximately 100,000 employees.

GENERAL INFORMATION

-

Function:
Production

Area:
57.500 m²

Location:
Ariceştii Rahtivani, PH, Romania

Client:
HAIER TECH

Status:
Built

Year:
2020

TASKS

-

General designer and
general contractor

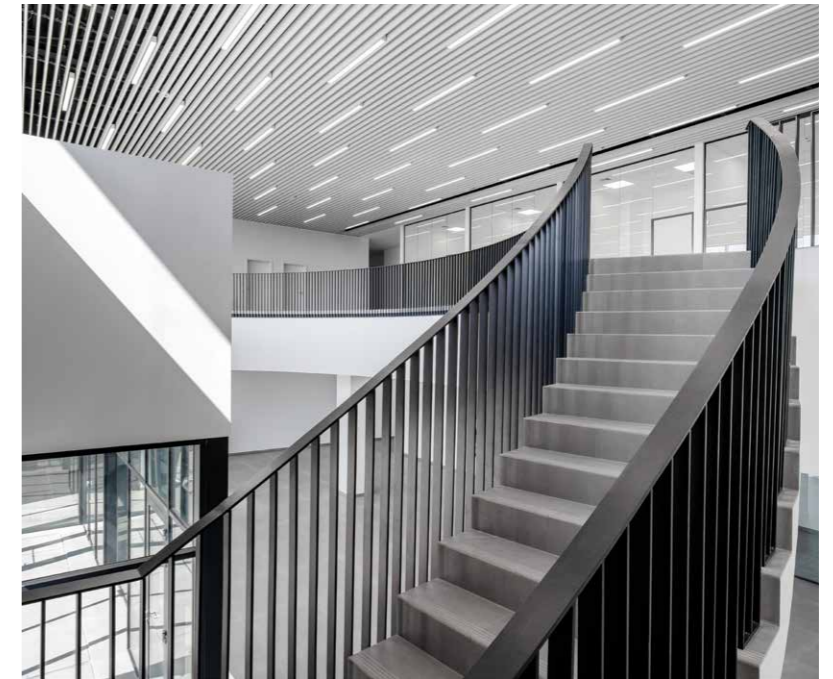


THE FACTORY

-

About:

The new factory will employ nearly 800 people – at full capacity – for an expected production of 600,000 units after 2022. The factory design, which is based on modular approach, will allow an expansion up to 1 million units at full capacity. The Romanian plant is a world-class facility featuring premium production processes brought by Haier's advanced R&D, manufacturing capabilities and know-how. Its strategic central location, technology and efficiency will enhance Haier's ability to serve customers in the region.



PROMENADA FESTIVAL SHOPPING CITY SIBIU

Festival Shopping City Sibiu is a shopping mall located near the historic center of Sibiu.

GENERAL INFORMATION

-

Function:
Retail

Area:
132.700 m²

Location:
Sibiu, SB, Romania

Client:
Festival Shopping Center

Status:
Built

Year:
2018-2019

TASKS

-

Design and build of structure and building envelope

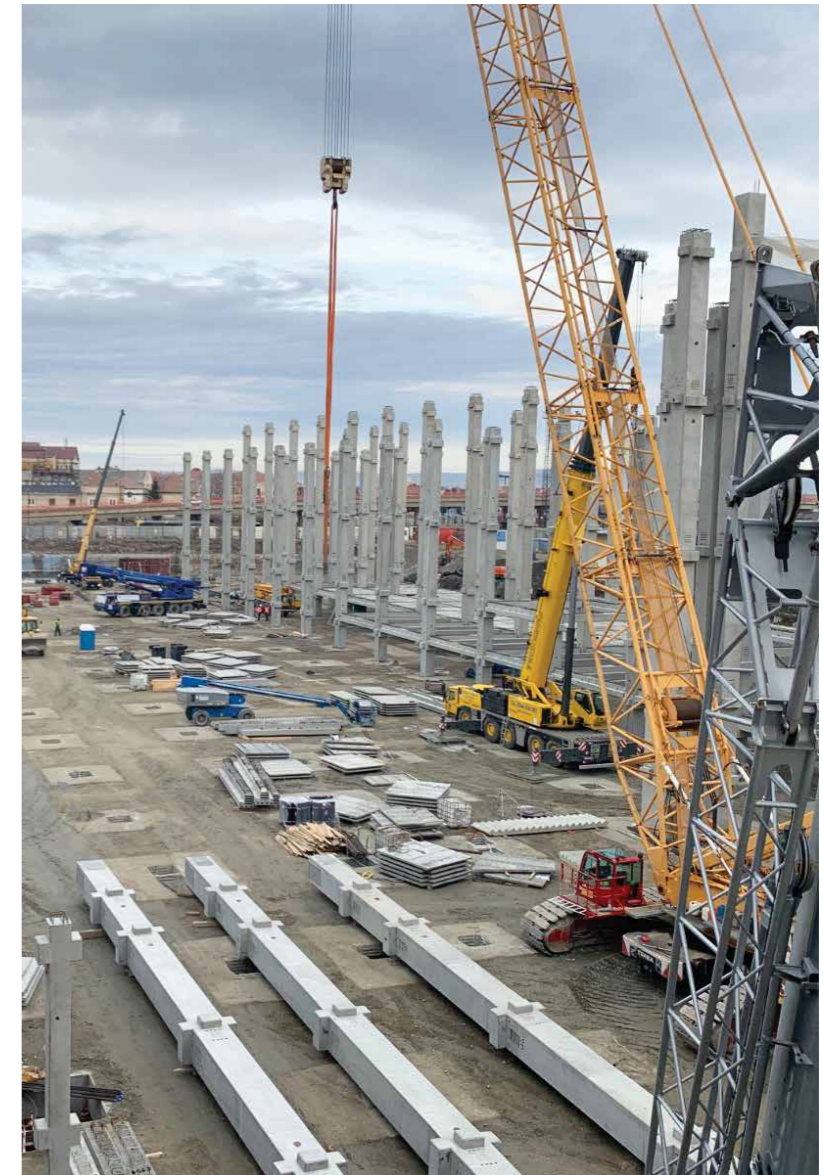


THE SHOPPING CENTER

-

About:

With 42.500 m² gross lettable area and 145 tenants, the shopping center only opened in 2019. The building is quite remarkable, with its playful facade and green roof promenade. Bauelemente had the opportunity to showcase its services by taking charge of the design and building the structures and enclosures.



DECATHLON

Decathlon is a French sporting goods retailer. With over 2080 stores in 56 countries, it is the largest sporting goods retailer in the world. Decathlon is dedicated to helping, inspiring and guiding their clients through their sports-related purchases.

GENERAL INFORMATION

-

Function:
Logistics

Area:
33.000 m²

Location:
Stefanestii de jos, IF, Romania

Client:
Decathlon, WDP Development

Status:
Built

Year:
2016-2017

TASKS

-

General designer and
general contractor



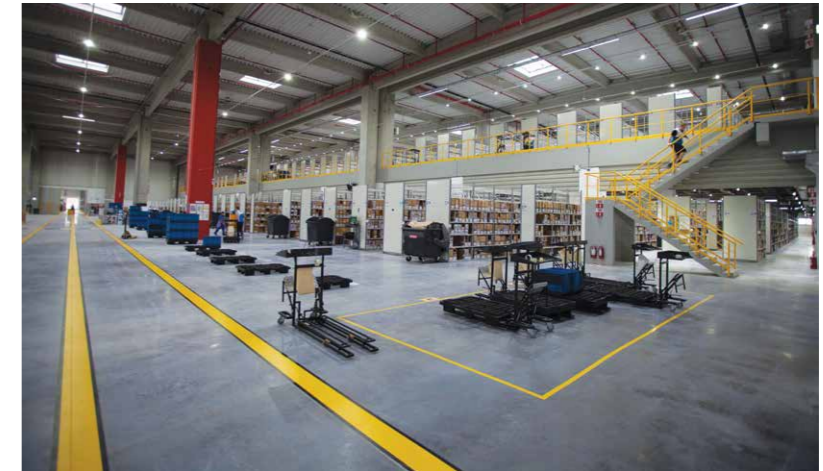
THE LOGISTICS FACILITY

-

About:

The logistics building, consisting of a warehouse and a distribution center, is located close to A3 Highway. The importance given to the social and administrative spaces through design has translated into a user-friendly building that prompts people to work better and communicate to obtain the best results.

Throughout the process, from design to build, our companies proved once again that a collaborative approach and integrated design are the best way to meet the client's needs.



ADEPLAST

AdePlast is the largest Romanian manufacturer of building materials, with four industrial platforms in Oradea, Ploiești, Roman and Ișalnița. Adeplast is the country leader and well recognised across Europe.

GENERAL INFORMATION

-

Function:

Production hall

Area:

10.800 m²

Location:

Ișalnița, DJ, Romania

Client:

Adeplast

Status:

Built

Year:

2018

TASKS

-

General contractor



THE FACTORIES

-

About:

Over the years, Baupartner Group has had several contracts with Adeplast. The most notable works include:

- 10.800 m², mortar and expanded polystyrene production hall in Ișalnița
- expanded polystyrene factory (phase III) and 1.910 m² paint factory, in Ploiești,
- 4.200 m² dry mortar factory and a 2.500 m², expanded polystyrene production hall in Roman



VULCAN RETAIL PARK

GENERAL INFORMATION

-

Function:
Services

Area:
29.000 m²

Location:
Bucharest, Romania

Client:
NEPI

Status:
Built

Year:
2014

TASKS

-

Structural design and general contractor, without the installations

NEPI Rockcastle is the premier owner-operator of shopping centers in Central and Eastern Europe (CEE) and are present in nine countries. NEPI - New Europe Property Investment developed a new retail park of approximately 28.390 m² on the site of the former Vulcan factory in Bucharest.



THE SHOPPING CENTER

-

About:

Vulcan Retail Park will serve the southwestern part of Bucharest, being designed to meet the needs of about 395,000 residents around it - the equivalent of a 30 minutes drive. The concept included building a Hypermarket and Gallery, a Strip Mall and a drive through fast food restaurant, all constructed at ground floor level around a central 874-bay car park.



GARTEN RESIDENZ

GENERAL INFORMATION

-

Function:
Residential

Area:
6.000 m²

Location:
Strejnicu, PH, Romania

Client:
Rombel Residence

Status:
Built

Year:
2019

TASKS

-

General designer and general contractor
Investor, Developer

Garten Residenz is a real estate complex, located in Strejnicu, Prahova, with a total of 72 units. This residential project provides 5 types of houses that are united in their diversity.



THE LUXURY RESIDENTIAL COMPLEX

-

About:

The newest and most ambitious housing project in Ploiesti, Garten Residenz, is a complex of houses located on the Western Belt of the city, in Strejnicu. Baupartner Construct, as general contractor, coordinated the project's entire implementation.



METRO

Metro AG is the leading international wholesaler and retailer. The distinctive business concept is oriented towards helping professional customers to successfully run their own businesses.

GENERAL INFORMATION

-

Function:
Logistic

Area:
55.000 m²

Location:
Stefanestii de Jos, IF, Romania

Client:
WDP Development

Status:
Built

Year:
2019

TASKS

-

General contractor



THE LOGISTICS FACILITY

-

About:

The logistics warehouse developed by WDP for Metro Cash & Carry in the north of Bucharest includes both a storage area without temperature control, as well as one with cooling and freezer for food distribution. Together with Metro and WDP, we contributed to the construction of the logistics center.

We are proud to have been given the opportunity to take on the role as general contractor and to rise to all the challenges that arose throughout the project.



RONDOCARTON

Rondocarton is a Romanian company within the Austrian group, Rondo Ganahl. Its business is centred around manufacturing corrugated board packaging products and corrugated case material and a range of paper and packaging.

GENERAL INFORMATION

-

Function:

Production hall

Area:

17.000 m²

Location:

Targoviste, DB, Romania

Client:

Rondocarton

Status:

Built

Year:

2006

TASKS

-

Design and general contractor



THE FACTORY

-

About:

This factory in the metropolitan area of Targoviste was opened in 2008 and uses the latest technologies and the best-trained employees to produce the full range of high-quality corrugated packaging. Baupartner helped expand the Rondo production network in Romania and was involved as general contractor on the design & build process.



LEM'S

The Lemet company has been founded in 1991 in Câmpina. Since then, it has gone through all the stages of evolution in order to become a solid and promising company. It currently has 70 stores with 72,000 sqm of exhibition space and about 900 employees.

GENERAL INFORMATION

-

Function:
Showroom

Area:
9.000 m²

Location:
Bleji, PH, Romania

Client:
LEMET

Status:
Built

Year:
2017

TASKS

-

Structural design and
general contractor



THE SHOWROOM

-

About:
The LEM'S showroom made for Lemet is located in the commercial area near Ploiesti, Prahova and it was built in 2017.



SAIPEM

Saipem is a world leader in engineering and drilling and in developing major projects in the energy and infrastructure sectors.

GENERAL INFORMATION

-

Function:
Industrial, Office

Area:
14.000 m²

Location:
Aricestii Rahtivani, PH, Romania

Client:
SAIPEM

Status:
Built

Year:
2015

TASKS

-

General design and
general contractor

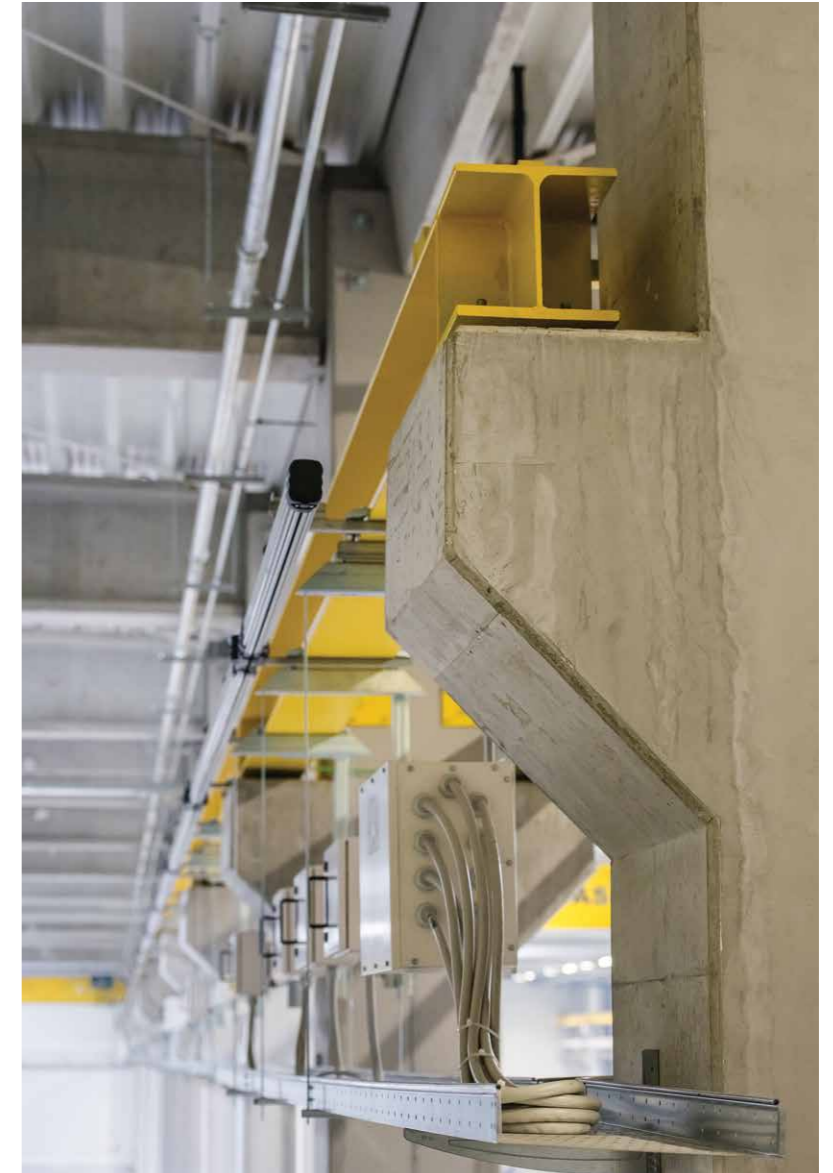


THE PRODUCTION HALL

-

About:

The Romanian division of Saipem needed a unit to process transport pipelines for crude oil and natural gas, with its administrative headquarters also located on the same site. Annexes, roads and footpaths, parking spaces, platforms, fencing and connections were also part of our construction job, covering everything from earthwork to internal finishes and external fittings.



CUBIC CENTER

Cubic Center is a beautifully designed and well-equipped class A office building located in the Pipera business area of Bucharest. The contemporary facilities in high quality, modern design with generous open spaces offer the perfect working environment.

GENERAL INFORMATION

-

Function:
Office

Area:
30.000 m²

Location:
Bucharest, Romania

Client:
Cubic Center

Status:
Built

Year:
2007

TASKS

-

General contractor



THE OFFICE BUILDING

-

About:

Located in the Pipera business area of Bucharest, the building provides 30.000m² of class A office space divided into 12 floors. Underground parking is over 3 floors. The structure consists of reinforced concrete columns, flat slabs and central cores. Cubic Center was built using a traditional in-situ structural system. It is one of the iconic works in our portfolio.



BAUPARTNER HQ

The headquarters of the Baupartner Group offer a high-class, innovative working environment its employees. Its “raw” architectural style showcases our day-to-day work to our clients and visitors.

GENERAL INFORMATION

-

Function:
Office

Area:
1.000 m²

Location:
Aricestii Rahtivani, PH, Romania

Client:
Baupartner SRL

Status:
Built

Year:
2016

TASKS

-

General design and
general contractor

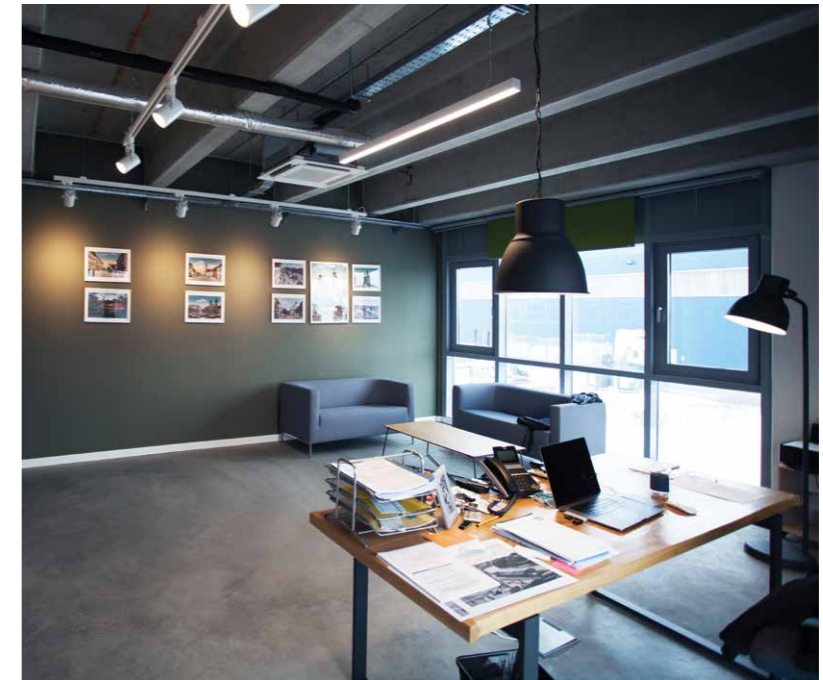


THE HEADQUARTERS

-

About:

The office building is situated close to Ploiesti and it was designed to accommodate all the companies of Baupartner Group. The interior design reflects the specific materials produced by the companies in their rough form: exposed concrete, visible metallic structures and formwork.





BAUELEMENTE PRODUCTS

FOR INDUSTRIAL BUILDINGS

Prefabricated foundations:



Columns:



Beams:

- Trapezoidal beam
- Beam type TR
- Rectangular beam
- Beam type L
- Beam type I
- Double slope beam



Ceiling:

TT ceiling

Wall panel:

Sandwich wall panels



FOR ROADS AND BRIDGES

For roads:

- New Jersey Barrier
- Concrete road bollards



For bridges:

- Beams
- Length: up to 38.0 m



FOR AGRICULTURE

-

For vineyard:

Middle pole orcharding
Section: 70 x 75 mm

End pole orcharding
Section: 83 x 85 mm

For orcharding:

Middle pole orcharding
Section 1: 75 x 80 mm
Section 2: 80 x 85 mm

End pole orcharding
Section 1: 95 x 95 mm
Section 2: 100 x 120 mm



BAUPARTNER GROUP OF COMPANIES



PORTFOLIO

2022-2021

PROJECTS	AREA	FUNCTION	ROLE
eMAG logistics center and office building in Budapest, Hungary	116,457 m ²	logistics, office building	designer & general contractor
LIDL logistic warehouse in Aricestii Rahtivani	82,438 m ²	logistics	general contractor
"Promenada Mall" in Craiova	76,995 m ²	retail	precast elements
CARREFOUR Supermarket in Alba Iulia	11,232 m ²	retail	precast elements
BOSCH warehouse in Blaj	2,118 m ²	warehouse	precast elements
JUMBO supermarket in Sibiu	14,935 m ²	retail	precast elements
Commercial galleries in Moreni	6,156 m ²	retail	precast elements
"BvW6" for KARL HEINZ DIETRICH in Brasov	11,132 m ²	warehouse	precast elements
PENNY Supermarket in Sabaoani	1,485 m ²	retail	precast elements
"SUNGARDEN" in Pucioasa	6,800 m ²	warehouse	precast elements
eMAG warehouse in Chitila for SAMEDAY	3,183 m ²	warehouse	designer & general contractor
Alianso production hall "NOV" in Aricestii Rahtivani	1,013 m ²	production hall	designer & general contractor
Production hall extension in Aricestii Rahtivani for HAIER	4,020 m ²	production hall	precast elements

2021-2019

PROJECTS	AREA	FUNCTION	ROLE
"BUCH 21" in Dragomirestii Vale	10,488 m ²	warehouse	precast elements
VGP in Stefanestii de jos	28,887 m ²	warehouse	precast elements
Global Star in Domnesti	2,385 m ²	warehouse	precast elements
Retail Park in Ploiesti	25,255 m ²	retail	precast elements
Auto Showroom	854 m ²	showroom	precast elements
LEM's showroom in Campina	3,300 m ²	showroom	general contractor
"LEMET" showroom in Brebu	8,442 m ²	showroom	general contractor
MATCA in Galati	1,480 m ²	warehouse	precast elements
Global Vision in Oarja	8,016 m ²	warehouse	precast elements
Global Vision B2 in Lazau, Constanta	24,850 m ²	warehouse	precast elements
Global Vision phase 2 in Chitila	14,940 m ²	warehouse	precast elements
Global Vision phase 3 in Chitila	36,953 m ²	warehouse	precast elements
Retail Park in Barlad	18,587 m ²	retail	precast elements
"Alcar" warehouse in Ștefăneștii de Jos for WDP	9,800 m ²	warehouse	general contractor
"Aggreko" warehouse in Ștefăneștii de Jos for WDP	2,800 m ²	warehouse	general contractor
DECATHLON warehouse extension in Ștefăneștii de Jos	10,434 m ²	warehouse	general contractor
eMAG logistics unit in Joița - Giurgiu	129,690 m ²	logistics	general contractor
HAIER refrigerator factory in Ariceștii Rahtivani	57,500 m ²	production	designer & general contractor
LIDL logistics center in Cernica	62,180 m ²	logistics	precast elements
PIRELLI warehouse in Slatina (phase II)	63,755 m ²	production	precast elements
Warehouse in Șura Mică for RARA LOGISTIC	6,880 m ²	warehouse	precast elements
Shopping center in Sf. Gheorghe for SEPSI	20,300 m ²	retail	precast elements
Warehouse in Ștefănești for BRIOTHERM XPS	3,600 m ²	logistics	precast elements
Car Trans Truck Service, warehouse and administrative section in Ploiești	2,750 m ²	warehouse	precast elements
SAMEDAY logistics center in Chitila for EMAG	27,000 m ²	logistics	designer & general contractor
Elemaster warehouse in Băiculești for E-RES REAL ESTATE & ENERGY	10,570 m ²	production	precast elements
"Promenada Festival Shopping City Sibiu" for FESTIVAL SHOPPING CENTER	132,700 m ²	retail	structures and building envelope

2019-2017

PROJECTS	AREA	FUNCTION	ROLE
Production hall in Filipeștii de Pădure for LTEN PROJECTS IND SRL	5,115 m ²	production	precast elements
PIRELLI warehouse in Slatina (phase I)	29,580 m ²	production	precast elements
"Garten Residenz" luxury residential complex in Strejnicu for ROMBEL RESIDENCE	6,000 m ²	residential	general contractor
"Targu Mures Shopping City" for TARGU MURES SHOPPING	56,000 m ²	retail	structures&building envelope
CARREFOUR logistics extension in Ștefăneștii de Jos for WDP	7,259 m ²	logistics	general contractor
"LPP Fashion" logistics center in Ștefăneștii de Jos for WDP	22,000 m ²	logistics	general contractor
"Metro Cash & Carry" logistics center in Ștefăneștii de Jos for WDP	55,000 m ²	logistics	general contractor
ADEPLAST mortar and expanded polystyrene production hall in Ișalnița	10,800 m ²	production&warehouse	general contractor
Production hall and warehouse in Satu Mare for ALU MENZIKEN	20,700 m ²	production&warehouse	general contractor
Production hall and warehouse in Dâmbovița for CURENT METAL	12,200 m ²	production&warehouse	precast elements
Warehouse in Dragomirești for E-RES REAL ESTATE & ENERGY	18,096 m ²	logistics	precast elements
Eurobody logistics center in Dragomirești for E-RES REAL ESTATE & ENERGY	30,706 m ²	logistics	precast elements
eMAG warehouse and office building in Joița - Giurgiu	125,424 m ²	warehouse	designer & general contractor
Warehouse and office building in Dragomirești for EPSTAIN	8,230 m ²	warehouse	precast elements
Bosch warehouse in Blaj for KARL HEINZ DIETRICH	22,000 m ²	warehouse	structures, finishings & platforms
Logistics center extension in Codela for WDP	3,500 m ²	logistics	general contractor
Production hall and warehouse in Ariceștii Rahtivani for ALINSO	20,790 m ²	production&warehouse	structure & exterior works
Production hall and warehouse in Ariceștii Rahtivani for ALINSO	8,900 m ²	production&warehouse	structure & exterior works
LIDL logistics center in Cordun for CONCRETE CONSTRUCTAG	44,000 m ²	warehouse	precast elements
"Râmnicu Sărat Value Centre" for DEROM TOTAL	7,500 m ²	retail	precast elements
"Sebeș Retail Park" for DEROM TOTAL	3,200 m ²	retail	design & execution of structures
Logistics center extension in Bolintin Deal for H.ESSERS INVESTITII	25,000 m ²	logistics	structures and sewagenetworks
Production hall and warehouse in Sibiu for IMPLENIA BAUGESELLSCHAFT M.B.H	13,410 m ²	production	structures and building envelope
"Otopeni West Park 14" for KARL HEINZ DIETRICH	10,600 m ²	warehouse	design & execution of structures
Lem's showroom in Ploiești for LEMET	9,000 m ²	showroom	general contractor
Warehouse in Târgu Mureș for MAPCOM	8,800 m ²	warehouse	precast elements
Production hall and warehouse in Râmnicu Vâlcea for MINET"	12,800 m ²	warehouse	general contractor

2017-2016

PROJECTS	AREA	FUNCTION	ROLE
"Shopping City Galați" for NEPI	27,480 m ²	retail	structures and building envelope
"Universal Negoiu Făgăraș - Mall" for PK RED	3,150 m ²	retail	general contractor
"Foșani Mall" for PK RED	6,100 m ²	retail	general contractor
"Târgu Secuiesc Retail Park" for PK RED	3,300 m ²	retail	general contractor
Paper roll production hall in Bucharest for ROMCARTON	42,000 m ²	production	structures and building envelope
Paper roll production hall in Târgoviște for RONDOCARTON	9,900 m ²	production	general contractor
Paper roll production hall extension in Târgoviște for RONDOCARTON	15,000 m ²	production	general contractor
CARREFOUR logistics center in Ștefăneștii de Jos for WDP	11,000 m ²	logistics	general contractor
Warehouse extension in Râmnicu Vâlcea for WDP	4,800 m ²	warehouse	general contractor
Skating rink in Otopeni for AGRO TERRA SOL INVEST	3,700 m ²	skating rink	precast elements
Production hall in Ariceștii Rahtivani for ALINSO	9,900 m ²	logistics	general contractor, except for MEP
Automotive production hall & office building in Ariceștii Rahtivani for ALLIANSO	2,200 m ²	production&office	general designer
Restaurant in Allianso Park, Ariceștii Rahtivani for ALLIANSO	577 m ²	services	general designer
Rebar cutting and bending factory in Ploiești for ARTSANI	3,000 m ²	production	design & execution of structures
Baupartner Group headquarters extension in Ariceștii Rahtivani for BAUPARTNER	600 m ²	office building	designer & general contractor
CARREFOUR shopping center extension in Brașov	4,900 m ²	retail	structures and building envelope
Warehouse and distribution center in Ștefănești for CARREFOUR	11,000 m ²	logistics	designer & general contractor
Logistics center extension in Ariceștii Rahtivani for IMMOFINANZ	15,000 m ²	logistics	structural design & general contractor
"Otopeni West Park 13" logistics center and offices for KARL HEINZ DIETRICH	10,600 m ²	logistics	design & execution of structures
Logistics center in Sibiu for KARL HEINZ DIETRICH	10,500 m ²	logistics	design & execution of structures
EMET Furniture warehouse in Brebu	5,000 m ²	logistics	structural design & general contractor
"Piatra Neamț Shopping City" for NEPI	38,000 m ²	retail	general contractor, except for MEP
Paper roll production hall in Popești-Leordeni for ROMCARTON	34,000 m ²	production	structures and building envelope
RONDO Paper roll warehouse extension in Târgoviște	1,500 m ²	warehouse	general contractor
SIIEPCOFAR warehouse in Chitila	7,500 m ²	warehouse	structures and MEP under 0.00 level
Automotive production hall in Brăila for WDP	27,400 m ²	production	designer & general contractor
Automotive production hall in Râmnicu Vâlcea for WDP	12,800 m ²	production	structural design & general contractor

2016-2014

PROJECTS	AREA	FUNCTION	ROLE
Textile production factory in Râmnicu Vâlcea for WDP	7,955 m ²	production	structural design & general contractor
Warehouse and distribution center in Ștefănești for WDP	29,500 m ²	logistics	designer & general contractor
Textile factory extension in Ariceștii Rahtivani for ALINSO	10,000 m ²	production	general contractor, except for MEP
Textile production factory extension in Ploiești for BIC	4,000 m ²	production	design & execution of structures
Residential complex in Craiova for BUJORULUI RESIDENCE	9,100 m ²	residential	general contractor
Paper production hall extension in Zărnești for ECOPAPER	5,000 m ²	production	structures and building envelope
Logistics centre in Brașov for KARL HEINZ DIETRICH	10,000 m ²	logistics	design & execution of structures
Logistics center in Otopeni for KARL HEINZ DIETRICH	11,000 m ²	logistics	design & execution of structures
Verification of gas and drilling pipes production hall in Ariceștii Rahtivani for SAIPEM	14,000 m ²	production & office	general designer & general contractor
Automotive production hall and office building in Ariceștii Rahtivani for WDP	12,000 m ²	production & office	design & execution of structures
Logistics center for automotive spare parts in Codlea for WDP	5,000 m ²	logistics	structural design & general contractor
LIDL warehouse in Ariceștii Rahtivani for ALINSO	10,000 m ²	logistics	designer & general contractor
Warehouses in Ariceștii Rahtivani for ALINSO	13,700 m ²	logistics	general contractor
Carservice in Bucharest for CARS TUNING	830 m ²	service	design & execution of structures
Expansion joints production hall in Ariceștii Rahtivani for DEKOMTE	4,000 m ²	production	general designer
Paper production hall in Brașov for ECOPACK	5,000 m ²	production	structures and building envelope
Paper manufacturing hall in Zărnești for ECOPAPER	14,000 m ²	production	structures and building envelope
Residential buildings in Volunatri for HIGH TECH CLIMA	2,500 m ²	residential	structural works & finishing works
LEMET furniture warehouse in Brebu	5,000 m ²	logistics	structural design & general contractor
LEROY MERLIN DIY store in Bragadiru	13,000 m ²	retail	structures and building envelope
“Vulcan Retail Park” in Bucharest for NEPI	29,000 m ²	retail	general contractor, except for MEP
“Timișoara Shopping City” for NEPI	38,000 m ²	retail	general contractor, except for MEP
Garment production hall in Urlați for OSTAZAR	5,000 m ²	production	design & execution of structures
“Cuză Vodă” multi-story parking lot in Ploiești for CITY OF PLOIEȘTI	10,000 m ²	car park	designer & general contractor
IT office building in Timișoara for SAGUARO	2,600 m ²	office	general contractor
Hydraulic cylinder production hall in Ariceștii Rahtivani for WDP	8,000 m ²	production	general contractor
Warehouse for WDP in Ariceștii Rahtivani, (phase I)	8,300 m ²	warehouse	general contractor

2013-2010

PROJECTS	AREA	FUNCTION	ROLE
ADEPLAST expanded polystyrene factory expansion in Oradea	3,000 m ²	production	structures and building envelope
Textile production factory in Ariceștii Rahtivani for ALLIANSO	20,000 m ²	production	design & execution of structures
“Mărășești” residential building in Ploiești for BAUPARTNER	590 m ²	residential	designer & general contractor
Textile production factory in Ploiești for BIC	18,200 m ²	production	design & execution of structures
Biogas factory in Filipeștii de Pădure for GENESIS BIOPARTNER	1,700 m ²	renewable energy station	designer & general contractor
Warehouse and Bentonite factory in Ariceștii Rahtivani for HALLIBURTON	1,800 m ²	production & warehouse	designer & general contractor
OTTER shoe factory in Bucharest	3,000 m ²	logistics	design & execution of structures
“MiniSat production hall” in Timișoara for PRESSAFE	4,000 m ²	production	design & execution of structures
Automotive spare parts logistics center in Codlea for WDP	7,500 m ²	logistics	structural design & general contractor
ADEPLAST EPS factory in Ploiești (phase III) and ADEPLAST paint factory in Ploiești	1,910 m ²	production	designer & general contractor
ADEPLAST dry mortar factory in Roman	4,200 m ²	production	designer & general contractor
ADEPLAST expanded polystyrene production hall in Roman	2,500 m ²	production	designer & general contractor
“Cora Shopping Center” in Bucharest	55,000 m ²	retail	design & execution of structures
INSPET Logistics center for oil distribution in Ploiești	7,500 m ²	logistics	design & execution of structures
LEMET Furniture warehouse in Brebu	5,000 m ²	logistics	structural design & general contractor
Aluminum production hall in St. Ana, Arad for MAGONTEC	5,000 m ²	production	design & execution of structures
“Ploiești Shopping City” for NEPI	2,000 m ²	retail	design & execution of structures
SCHLUMBERGER headquarters in Ariceștii Rahtivani	20,000 m ²	office, service & logistics	design & execution of structures
Automotive production hall in Oarja for WDP	8,000 m ²	production	designer & general contractor
ADEPLAST Expanded polystyrene factory in Corlătești (phases I + II)	7,850 m ²	production	designer & general contractor
Production hall and logistics center in Ariceștii Rahtivani for ALLIANSO	12,500 m ²	logistics & production	structures and building envelope
Plastics factory production hall in Oradea for JÁSZ PLASZTIK (phase II)	12,800 m ²	production	structures and building envelope
KAUFLAND Logistics center in Turda	59,000 m ²	logistics	design & execution of structures
Warehouse, workshop and office building in Ariceștii Rahtivani for LUFKIN	35,000 m ²	production & office	design & execution of structures
TORO MANUFACTURING AND SALES factory in Ariceștii Rahtivani	14,000 m ²	production & office	design & execution of structures
“Severin Shopping Center” in Drobeta-Turnu Severin for BELROM	49,000 m ²	retail	design & execution of structures
Plastics factory production hall in Oradea for JÁSZ PLASZTIK (phase I)	12,800 m ²	production	structural design & general contractor

2010-2006

PROJECTS	AREA	FUNCTION	ROLE
Electronic components production hall in Oradea for SHINHEUNG	35,000 m ²	production	structural design & general contractor
BAT warehouse in Ariceștii Rahtivani for ALINSO	20,000 m ²	logistics	design & general contractor
“Unilever” logistics center in Ariceștii Rahtivani for ALINSO	35,000 m ²	logistics	design & general contractor
Sports hall for “Vocational School, No. 2” in Bucharest for BUCAREST city hall	6,000 m ²	educational	design & execution of structures
Electronic components production hall in Oradea for HANIL	26,000 m ²	production	structures & building envelope
Office building in Otopeni for NOVOMATIC	17,800 m ²	office	design & execution of structures
Logistics center extension in Ploiești for PLUS	15,000 m ²	logistics	design & execution of structures
PRADIS office building in Ploiești	1,500 m ²	office	structures and building envelope
Cellular concrete production hall in Ariceștii Rahtivani for XELLA	8,600 m ²	production	design & execution of structures
“Uptown” apartments in Ploiești for ADAMA	14,000 m ²	residential	general contractor
Extension of precast concrete factory in Ariceștii Rahtivani for BAUELEMENTE	4,645 m ²	production	designer & general contractor
Baupartner Group headquarters in Ariceștii Rahtivani for BAUPARTNER	1,988 m ²	office	designer & general contractor
“Focșani Retail Park” for BELROM	49,000 m ²	retail	design & execution of structures
Service and office building in Ploiești for CAMERON	13,000 m ²	offices & service	design & execution of structures
“Hotel Tiara Ploiești” extension	5,500 m ²	hotel	design & execution of structures
“West Gate Center Mall” in Craiova for IMMOFINANZ	73,000 m ²	retail	general contractor, except for MEP
Logistics center and offices in Ploiești for PIRITEX	14,500 m ²	logistics	design & execution of structures
STAER Furniture store in Focșani	3,500 m ²	retail	design & execution of structures
BAUELEMENTE pre-cast reinforced concrete elements in Ariceștii Rahtivani	12,600 m ²	production	designer & general contractor
“Cubic Center” office building in Bucharest	30,000 m ²	office	general contractor
KAUFLAND supermarket and headquarters in Bucharest	15,000 m ²	retail & headquarters	designer & general contractor
“Edenia” apartments in Bucharest for ADAMA	25,000 m ²	residential	structural & finishing works
“Titanium” apartments in Bucharest for ADAMA	6,000 m ²	residential	general contractor
INTEREX supermarket in Târgoviște	4,000 m ²	retail	general contractor
BMW service building and offices in Bucharest for MHS BUS & TRUCK	4,600 m ²	showroom & service	general contractor
MAN service building and offices in Bucharest for MHS BUS & TRUCK	4,600 m ²	showroom & service	designer & general contractor
PLUS DISCOUNT supermarket in Medgidia	1,630 m ²	retail	general contractor

2006

PROJECTS	AREA	FUNCTION	ROLE
RONDOCARTON Corrugated cardboard factory in Târgoviște	17,000 m ²	production	designer & general contractor
Warehouse & office building in Bucharest for SUPERFOOD	1,900 m ²	logistics	general contractor

2006-2022

55 KAUFLAND supermarkets across Romania	396,321 m ²	retail	design & execution of structures
11 LI DL supermarkets across Romania	28,069 m ²	retail	design & execution of structures
31 warehouses and office buildings for CTP across Romania	1,060,578 m ²	warehouse	design & execution of structures

TOTAL BUILT AREA:

4,483,020 m²



SUMMARY AND CONTACT

A SHORT SUMMARY

Meeting your needs is our mission. We offer integrated solutions for buildings, from design and production to general operations, giving people the power to grow their business and projects.

Our mission is to improve your project by using our innovative construction methods to fulfill your needs.

CONTACT

E: lajos.hardi@baupartner.hu
P: + 36 30 114 8808



www.baupartner.hu



WWW.BAUPARTNER.HU

THE RIGHT PARTNER

**PART OF BAUPARTNER
GROUP OF COMPANIES**



CONTACT

Address:
Baupartner HU KFT
Hungary

Phone

Online
Email: lajos.hardi@baupartner.hu

1112 Budapest | Balatoni u 2/A
B épület, 1. emelet

+36 30 114 8808

Website: www.baupartner.hu
